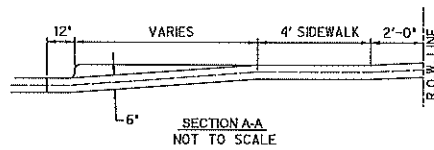


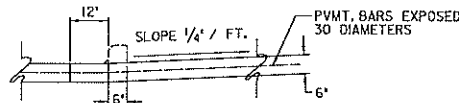
**NOTES:**

1. DRIVEWAYS SHALL BE 12 FOOT WIDE OR SHALL MATCH EXISTING, 19' WIDE MINIMUM. NEW DRIVES WILL BE CONSTRUCTED TO PROPERTY LINE. IN REPLACING EXISTING DRIVES, THE EXISTING DRIVE WILL BE SAVED AND REMOVED AT A DISTANCE WHICH WILL ASSURE A SMOOTH GRADE, (TO BE SPECIFIED BY THE ENGINEER) AND WILL BE REPLACED TO THAT POINT. GRADE NOT TO EXCEED 1/10 TO THE FOOT RISE.
2. FOR DRIVEWAYS BEING INSTALLED TO EXISTING PAVEMENT, SAWCUT CURB AND DOWEL INTO EXISTING PAVEMENT. SEE DOWEL DETAIL ON THIS SHEET.

**DRIVEWAY DETAIL**  
NOT TO SCALE



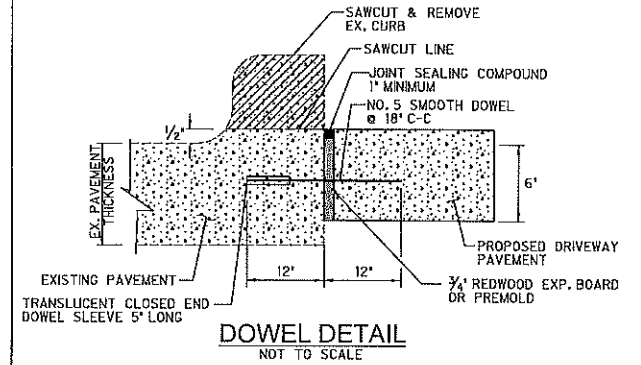
SECTION A-A  
NOT TO SCALE



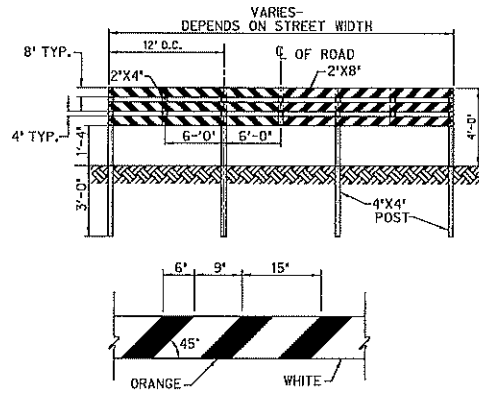
SECTION B-B  
NOT TO SCALE

**NOTE:**

CURB, GUTTER, PAVEMENT, AND VALLEY TO BE POURED MONOLITHIC. THE REINFORCED CONCRETE VALLEY SHALL REPLACE THE CONCRETE PAVING WITH THE SUBGRADE AND BASE TREATMENT REMAINING THE SAME IN ACCORDANCE WITH THE TYPICAL PAVING SECTION. THE CONCRETE VALLEY WILL BE CONSTRUCTED ACCORDING TO THE TOWN OF ANNETTA PAVING STANDARDS.



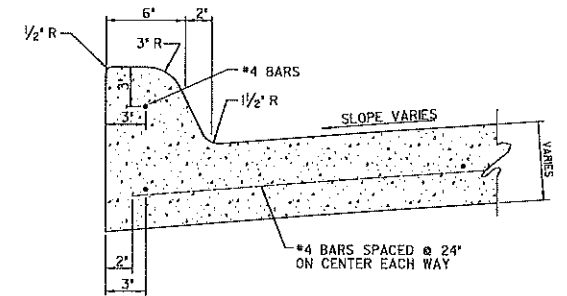
**DOWEL DETAIL**  
NOT TO SCALE



**END OF ROAD BARRICADE DETAIL**  
NOT TO SCALE

**NOTES:**

1. REFLECTIVE SHEETING FOR ALL TRAFFIC CONTROL DEVICES SHALL BE OF HIGH SPECIFIC INTENSITY (TYPE IIIA OR IIIB). ALL CHANNELIZATION DEVICES SHALL USE TYPE IIIA REBOUNDABLE SHEETING.
2. ATTACH 2"x 8" BOARDS TO 4"x 4" POST WITH LAG BOLTS.
3. ATTACH 2"x 4" BRACES TO 2"x 8" BOARDS WITH 10d-NAILS.
4. BARRICADE TO BE FULL WIDTH OF STREET BACK OF CURB TO BACK OF CURB.
5. IF BARRICADE IS USED TO DENOTE END OF ROADWAY, DIAGONAL STRIPES USED SHALL BE RED AND WHITE.



**6" MONOLITHIC CONCRETE CURB**  
NOT TO SCALE

[P-10]

**CERTIFICATION:**  
THIS TOWN OF ANNETTA STANDARD DETAIL SHEET IS AUTHORIZED FOR USE IN THIS PROJECT BY THE ENGINEER WHOSE SEAL APPEARS ON THIS SHEET. THIS ENGINEER IS ALSO CERTIFYING THAT THE CONTENT OF THE DETAILS AND NOTES ON THIS SHEET HAVE NOT BEEN ALTERED FROM THAT RECEIVED FROM THE TOWN OF ANNETTA.

**PAVEMENT STANDARD DETAILS**  
**DRIVEWAYS, CURBS, AND MISCELLANEOUS PAVEMENT DETAILS**



THE TOWN OF ANNETTA  
TEXAS

DESIGN	DRAWN	CHECK	DATE	SCALE	FILE	NO.
HALFF	HALFF	HALFF	MARCH 2016	N.T.S.	P-10	